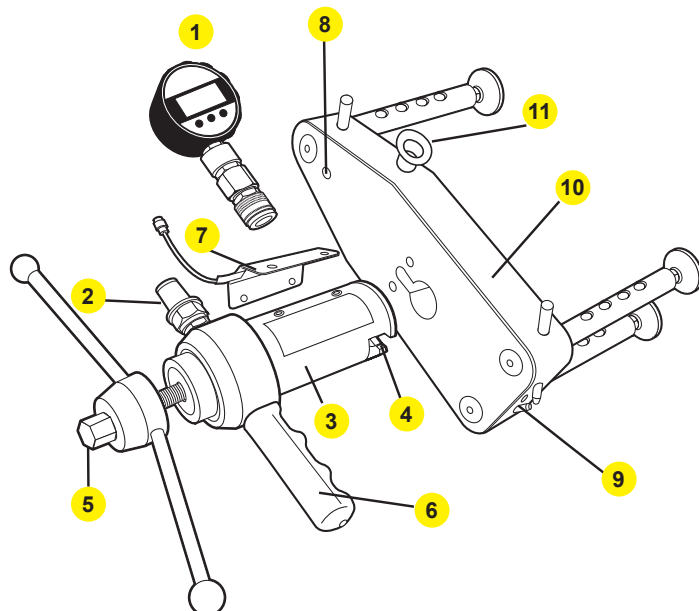


MAC 02 Macchina idraulica per prove di estrazione, portata 50kN, con visualizzatore digitale ed accessori di prova, in valigetta



SCHEDA TECNICA



- | | |
|----|---|
| 1 | Indicatore digitale con attacco rapido |
| 2 | Attacco rapido |
| 3 | Corpo dello strumento con indicatore di corsa da 50 mm |
| 4 | Ganascia di tiro |
| 5 | Maniglia con dado integrato |
| 6 | Impugnatura |
| 7 | Sensore di spostamento (Opzionale, da ordinare a parte) |
| 8 | Livella circolare a bolla |
| 9 | Spinotto di bloccaggio delle gambe |
| 10 | Telaio di contrasto |
| 11 | Golfare di sicurezza |

DATI TECNICI MAC 02

Codice articolo	Portata (kN)
MAC 02 00 050	50

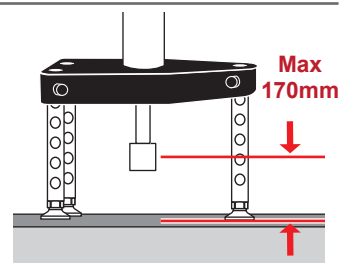
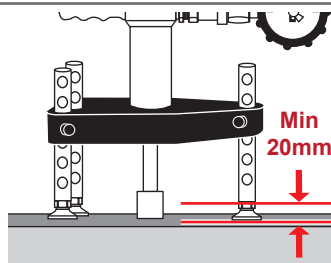
Specifiche tecniche

Intervallo di carico	0-50kN/lb/f
Peso della sola macchina	2.5kg
Peso completo della valigia	14kg
Corsa effettiva	50mm
Scala graduata	0-50mm
Indicatore di carico	Intercambiabile
Involucro	Alluminio
Gambe	Incernierate, ruotano di 360° con ritorno a molla
Maniglia	Misura standard con dado chiave 24 per spazi limitati

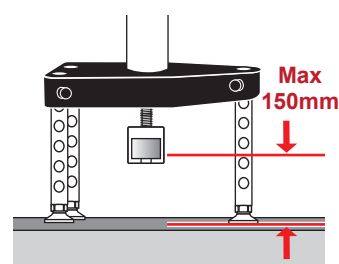
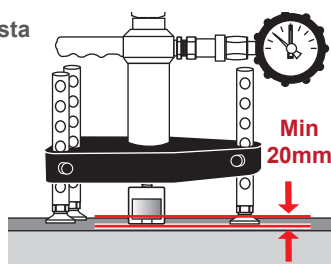
Indicatore di carico

Intervallo di misura	0-50kN
Accuratezza	to +/-0.5% fsd
Intervallo di temperatura	-30°C to +85°C
Indicazione del carico registrato	
Calibrato in kN	
Certificato di calibrazione fornito con ogni indicatore	
Resistente agli urti	
Protetto da repentine variazioni di carico (come cedimenti improvvisi del fissaggio)	

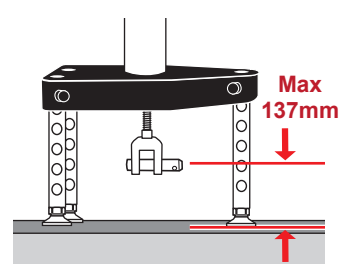
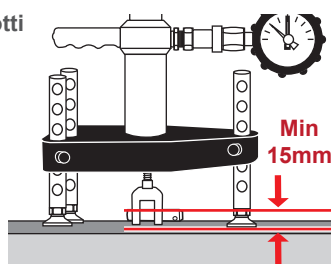
Barre filettate



Ancoraggi con testa



Occhioli - Cavallotti

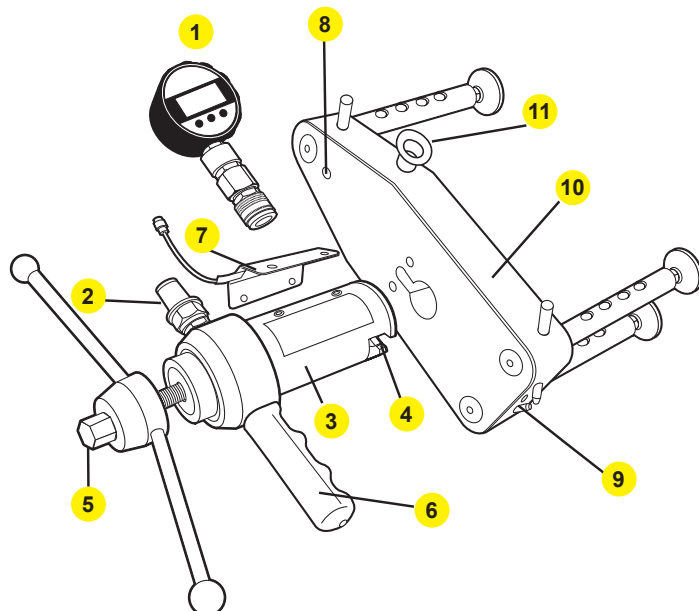


Con barra filettata Max 220mm

MAC 02 Hydraulic Pull-out tester kit, tensile capacity 50 kN with digital gauge and accessories, in carrying case



TECHNICAL DATA SHEET



- | | |
|----|---|
| 1 | Gauge - Digital with QR Hydraulic Coupler |
| 2 | Quick release coupling when fitted or gauge (1 & 2) |
| 3 | Tester body with 50mm/scale indicator |
| 4 | Load jaw |
| 5 | Turning handle with integrated nut |
| 6 | Grab Handle |
| 7 | Displacement sensor |
| 8 | Level bubble |
| 9 | Leg pins |
| 10 | Tester bridge |
| 11 | Safety eyehook |

TECHNICAL DATA SHEET MAC 02

Item Code	Tensile capacity (kN)
MAC 02 00 050	50

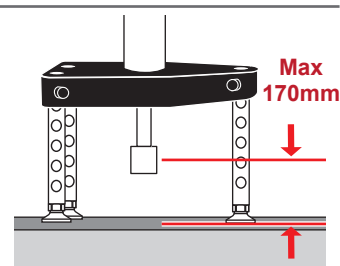
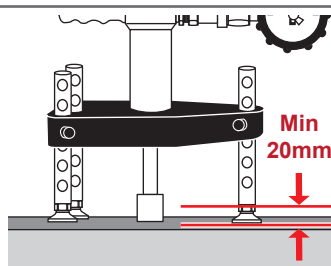
Technical Specifications

Pull-out load range	0-50kN/lb/f
Weight Tester only	2.5kg
Gross Box weight	14kg
Effective stroke	50mm
Stroke scale	0-50mm
Load gauge	Interchangeable
Casing	Aluminium
Loading jaw	Pivot-able through 360° with Spring return
Operating handle	Standard size with integrated 24mm nut for confined spaces

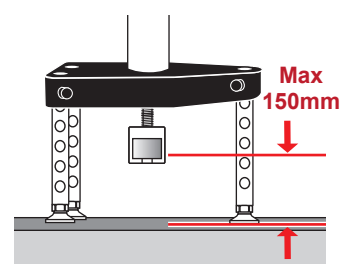
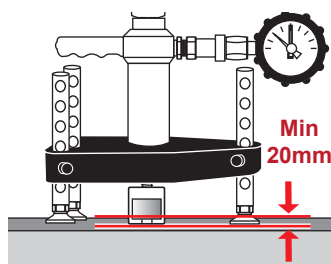
Digital Load Gauge

Range available	0-50kN
Accuracy	to +/-0.5% fsd
Working Temperature	-30°C to +85°C
Indication of pull-out load	
Calibrated in kN	
Traceable calibration certificate supplied with each gauge	
Impact resistant glass	
Protection against sudden load relief (i.e. sudden failure of fixing)	

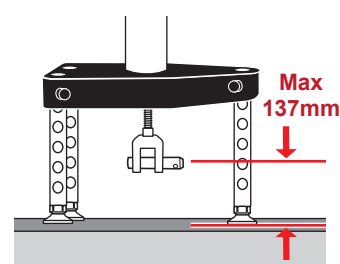
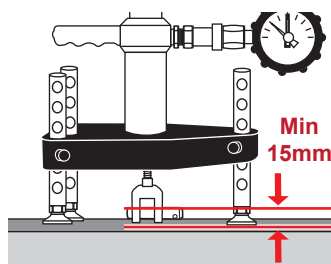
Threaded Stud



Bolt head



Clevis



with Threaded stud Max 220mm